

# ScanX Swift 2.0

The flexible digital solution.





## Ready for Dental Practice 2.0

With innovative and practical solutions, Air Techniques has been pioneering and shaping the field of dental imaging for over six decades. The new ScanX Swift 2.0 continues to carry in that tradition. Bringing flexibility and ease of use thanks to our extremely thin and flexible IDX PSPs, combined with the help of Artificial Intelligence (AI) to meet all your intraoral diagnostic imaging needs.

With superior image quality, the ScanX Swift 2.0 makes your dental practice sustainability ready for the future, while bringing diagnostic efficiency and reliability to the next level, today.

### Features:

- High-resolution image quality for easier diagnostics
- New “Easy Feed” concept for all intraoral formats (0, 1, 2, 3, 4) IDX PSPs
- Hygienic, high-resolution glass display
- Packed with intelligent workflow automation functions in combination with ScanX IDX PSPs and VisionX AI software

## Quality and efficiency demand Intelligent functions

The ScanX Swift 2.0 works with IDX PSPs to ensure that it lives up to its full potential. Alongside the tried-and-tested technology and outstanding image quality, this combination offers a wide range of new features that noticeably improve user diagnostic capabilities, efficiency, and reliability.



## Sustainability built in from the start



### Greener Production

All ScanX Swift models are manufactured with sustainability in mind, and with CO<sup>2</sup> neutral production. All divisions of Air Techniques are committed to using resources in the most responsible way possible.



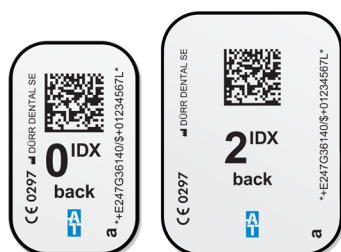
### Greener Products

With all of our products, it is important for us that we continue to improve energy efficiency and maximize service life by making all our units easy to repair and service. And, of course, last but not least everything is packaged in a safe and eco-friendly way.

# Clear advantages

## Quick and easy scanning

With the new Easy Feed concept, you can scan IDX PSPs very quickly, one after the other. The interchangeable guides make it possible to capture all intraoral phosphor storage plate formats.



## The Key Features

The scope of delivery includes everything you need to scan IDX PSPs in size 0 and 2.

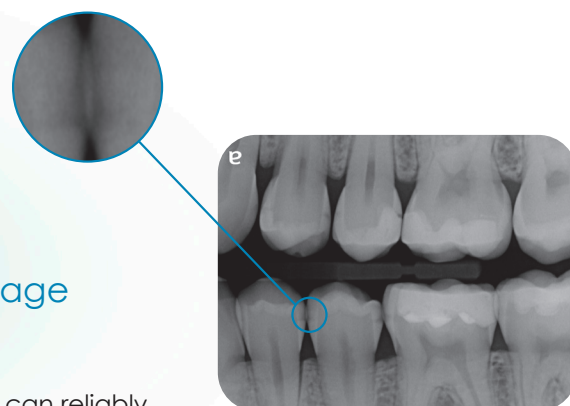






## Glass display

The high-resolution color display offers a very user-friendly interface.



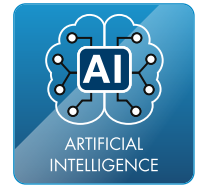
## Diagnostic image quality

The ScanX Swift 2.0 can reliably highlight incipient carious lesions and make the tiniest bone structures visible.

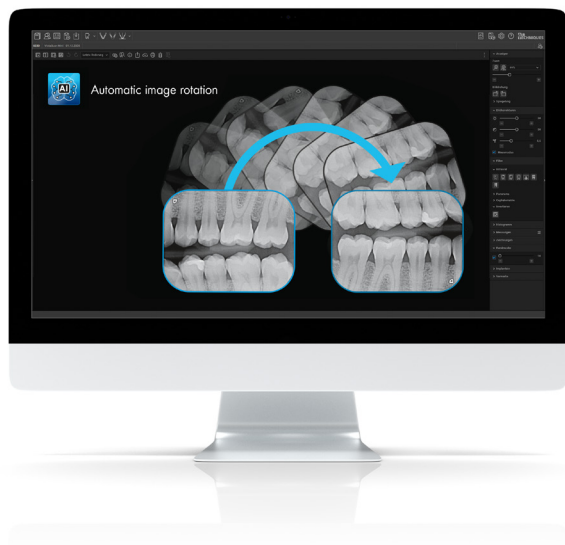
## Simple Connection

The LAN interface makes it easy to integrate the ScanX Swift 2.0 into any network.

# VisionX AI automation included



With the included VisionX software package, you will gain access to powerful AI features that will not only make your day-to-day work in the practice noticeably more efficient but will also significantly increase the reliability of diagnostic work ahead of complicated procedures.



## Automatic image rotation

VisionX uses an algorithm based on AI to check the orientation of intraoral X-ray images on the basis of anatomical features shown and corrects the rotation of the image automatically if needed. This will save you valuable time.

## Automatic PSP quality check

In conjunction with IDX PSPs, VisionX AI performs an automated check of image plate quality on every intraoral image captured. This ensures excellent image quality on a long-term basis.



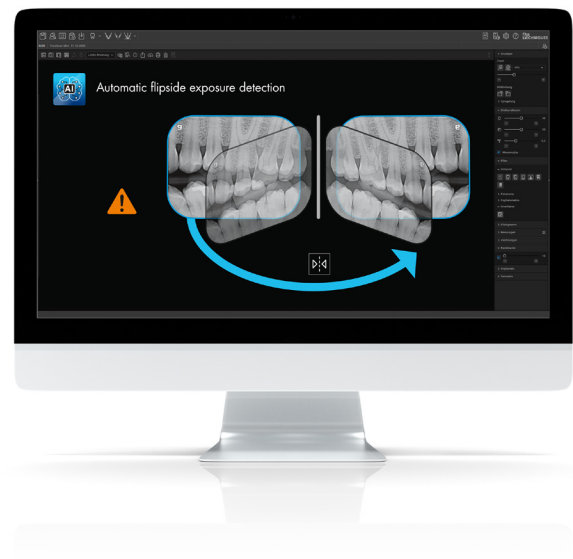


## Automatic tooth detection/image assignment

Using AI, all displayed teeth are recognized directly after the exposure and stored in the dental chart. This will save you valuable time.

## Wrong side exposure detection

VisionX AI automatically detects if the wrong side of the image plate has been exposed and issues a corresponding warning for the user.



## VisionX 3D

The package comes with a full 2D and 3D X-ray license for VisionX, which allows you to view and diagnose 2D and 3D image data even without your own dedicated CBCT device.

# Facts, figures and accessories at a glance

G8800A ScanX Swift 2.0	
Display	2.4" color glass display
Plate sizes	S0, S2; optional S1, S3, S4
Theoretical resolution LP/mm (dpi)	40 (2,000)
Effective resolution LP/mm (dpi)	22 (1,100)
Greyscale (bit)	16 (65,536)
Weight (lbs/kg)	11.2 / 5.1
Dimensions (H x W x D inch/mm)	9.80 x 8.31 x 10.16 / 249 x 211 x 258
Standby function	Yes
Interfaces	LAN



## SensorX

SensorX offers an effective resolution of 20 LP/mm with particularly fast image availability. The sensor can be connected directly via USB ('Plug & Ray') and is available in two sizes: Size 1 and Size 2.



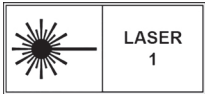
## ProVecta HD

Perfectly tailored for a digital workflow with PSPs, Intraoral Sensors and even Traditional Film.



## Phosphor storage Plate Cleaning Wipe

Dirt on PSPs will show up in the images and shorten their service life. ScanX PSP Cleaning Wipes provides intensive cleaning for the image plates. Advantage: long-lasting, optimum image quality.



CORPORATE HEADQUARTERS  
1295 Walt Whitman Road  
Melville, New York 11747- 3062  
800-247-8324  
[www.airtechniques.com](http://www.airtechniques.com)

ScanX is a registered trademark of Air Techniques, Inc.  
© Copyright 2024  
PN 9922-122 Rev. B

